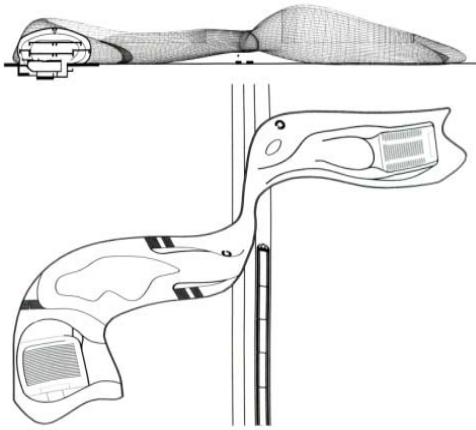
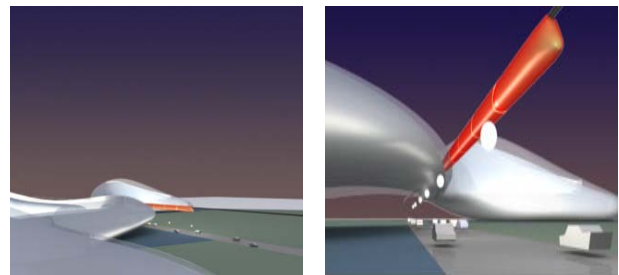


The "Pol" cultural center project, on the Iranian coast of the Caspian Sea, is an entity evoking a malleable concept of fluidity, mutation and evolution in space and time.

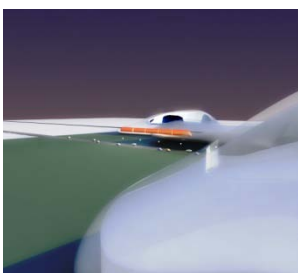
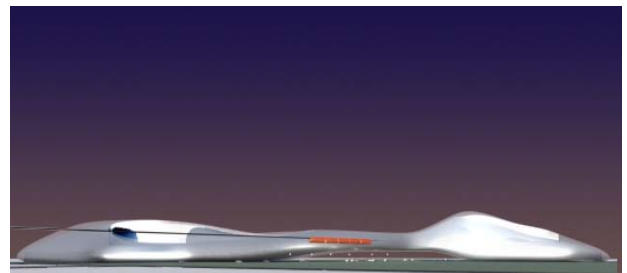


Like a soft and sensual magma, the project evolves and changes spaces and directions as it constantly interacts with its surroundings. What is generated, is a field of multiple directions, viewpoints and dimensions, which vary as the way they are perceived alters, taking on even contrasting conformations. Light is the only constant, the only certain and ever-present existence, which gives life and strength to the overall design, dictating the pattern of intervals, intercepting its spaces through a combination of movements and pauses. The concept of change, dynamism and variation of states, aerial/ground, transparent/opaque, curved/straight etc., is mirrored in the different kinds of functional, direct and looping pathways, creating an organic grid, which may be accessed and used after being filtered through imaginary worlds and actually interact with reality in the finished work.

The sense of light is inspired by the philosophical thinking of one of the leading exponents of ancient Iranian philosophy, Sohrevardi, born in Persia around the year 1100, who places the concept of light and darkness at the focus of his thoughts. And it is the idea of light in particular, as a component and part of very nature of all beings, which inspires us most profoundly: "the project is set in the universe of light ... in our project, pure light will make the forms comprehensible or, at times, will even annihilate them through powerful flashes; everything looks like an Imaginary World, an inner experience, and its by means of ... the active imagination that man can reach this dimension".



And so the project becomes part of our world, integrated in the spatial hierarchies, controlling highly visible functional concept, which incorporates standards of sustainability and energy saving in construction technology and selects the most cutting-age materials (Translucent Concrete, Aerogel, Polymerized Glass, Nonostills for large structural openings ...) with great lucidity to allow the imaginary world to flow in to concrete reality. Philosophy of light interacts with scientific thinking and culture which finds fertile ground for experimentation and application in the advanced thinking.



The project is the result of private initiatives, located in a large park of 100. 000 sqm. divided by a road perpendicular to the coast (coast of Caspian) and then to the sea itself. Primarily the client program would have required two separate buildings on either side of the road, connected in turn with a traditional bridge. The alternative to this idea was the design of a bridge-building, metaphor of a cultural bridge, a bridge between different cultures.

A monorail running from the high mountains behind, leads to the sea, affecting the bridge in the central part which is higher above the road.

The Pol project (Pol in Persian language means bridge) is spread over five floors. These are two underground floors for parking lots, warehouses and logistics facilities, and two floors and a large loft above the ground. On the ground floor are placed the main pedestrian entrance, lobby, reception services information, Exhibition halls, and the vertical connections to the administrative offices with access to the theater and amphitheater. On the first floor are located the classrooms and laboratories, and meeting rooms. In the loft are positioned the traditional restaurants with bar services, access to wide outdoor terraces. The theaters, the library, administrative offices and a private restaurant and bar for staff and professionals, again with a rooftop terrace viewed to the sea from one side and to the green mountain from the opposite side.

The project is developed on an area of 49,000 square meters of which 36,000 square meters above ground.